

Scavenger Hunt: Neighborhoods

What did Geneva look like then versus now? Help us document the changes made since these photos were taken by replicating the views from our 19th-century photos. We'll display them during the My Geneva Is...Then and Now exhibit opening in September 2022!



Castle Heights
Maple Street



Founders Square
Pulteney Street, looking
south from Castle Street



Historic North
Genesee Park



Hildreth Hill
Elmwood Avenue looking west
from Pulteney Street

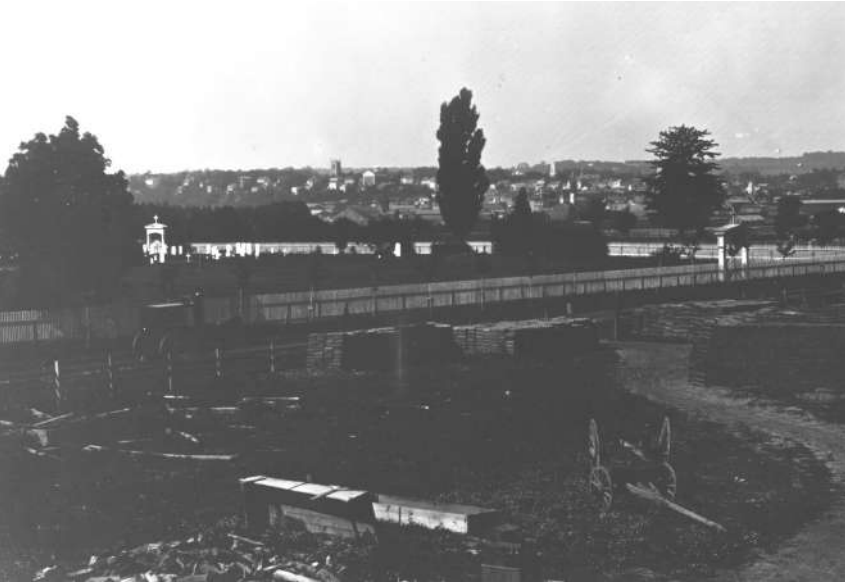
Scavenger Hunt: Neighborhoods

The Arbors
construction of
West High Street



East Lakeview

View of Geneva to the southwest from
tile yard across from Catholic Cemetery



Western Gardens
West Washington St



Lehigh Gardens
Along Genesee St

